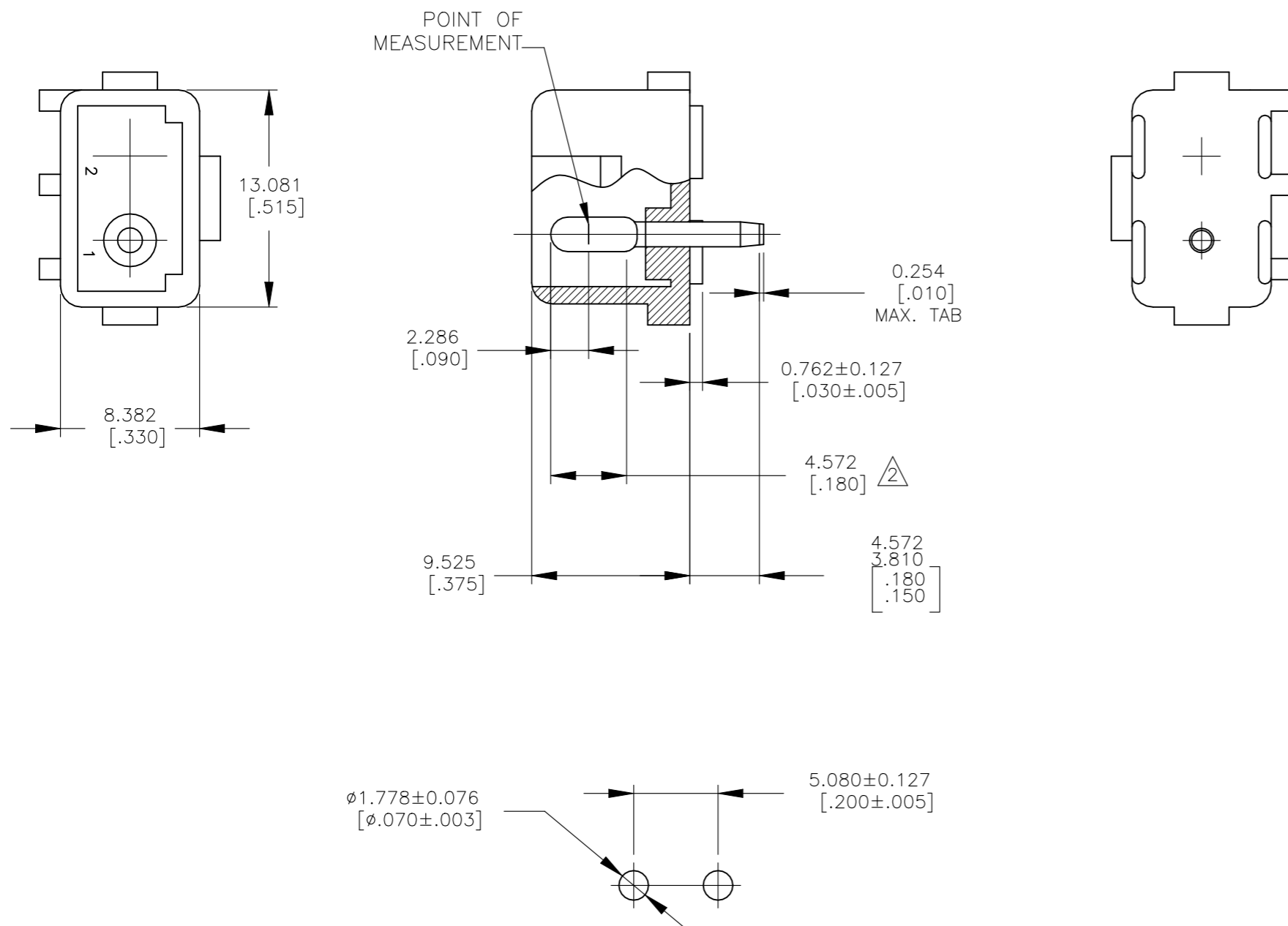


THIS DRAWING IS UNPUBLISHED. RELEASED FOR PUBLICATION  
 © COPYRIGHT 1586512 BY TYCO ELECTRONICS CORPORATION. ALL RIGHTS RESERVED.

LOC	DIST	REVISIONS					
CM	00	P	LTR	DESCRIPTION	DATE	DWN	APVD
			A	REVISED PER ECR-21-117185	25OCT2021	PJ	VS



- PARTS MUST COMPLY WITH SOLDERABILITY SPEC. 109-11-3.
- CONTACT IS PLATED OVERALL WITH .000050 NICKEL, THEN .000030 GOLD OVER CONTACT LENGTH INDICATED AND MATTE TIN ON SOLDER TAIL END.
- DIMENSION SHOWN REPRESENT PRODUCT IN DRY CONDITION. ADDITIONAL 2% GROWTH DUE TO END USE LOCATION MOISTURE ABSORPTION MAY OCCUR AND SHOULD AND SHOULD BE ACCOUNTED FOR.

RECOMMENDED LAYOUT FOR  
 1.575[.062] THICK P.C. BOARD

1586530-2	NYLON-NAT.	COPPER ALLOY-GOLD
ASSEMBLY NO.	HSG, MATL& COLOR	PIN MATL & FINISH

THIS DRAWING IS A CONTROLLED DOCUMENT.		DWN	10OCT2005		<b>tyco</b> Electronics	Tyco Electronics Corporation	
DIMENSIONS: mm [INCHES]		CHK	-			Harrisburg, PA 17105-3608	
TOLERANCES UNLESS OTHERWISE SPECIFIED:		APVD	-		NAME	2 CIRCUIT COMMERCIAL MATE-N-LOK (TM) HEADER	
0 PLC ± -		PRODUCT SPEC	-		APPLICATION SPEC	-	
1 PLC ± -		WEIGHT	-		SIZE	CAGE CODE	DRAWING NO
2 PLC ± -		CUSTOMER DRAWING		A3	00779	C-1586530	RESTRICTED TO
3 PLC ± -		SCALE	3:1		SHEET	1 OF 1	
4 PLC ± -		REV	A				
ANGLES ± -							
MATERIAL							
SEE TABLE							
FINISH							
SEE TABLE							

**METRIC**